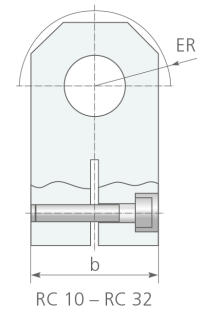
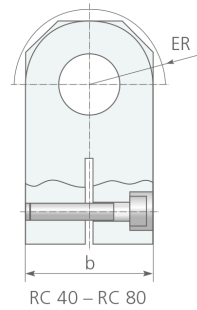
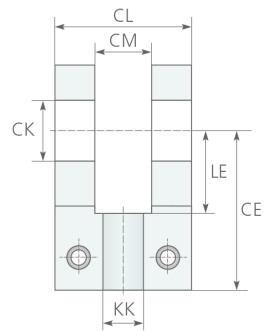


GABELKOPF Typ RC DIN ISO 8132 RC ...



	b max	CE	CK H9	CL	CM	ER	KK	LE min	m	F nom.	[-]
	Js12		h16	A12	max						
	[mm]	[mm]	[mm]	[mm]	[mm]	[mm]	[-]	[mm]	[kg]	[kN]	
RC 10	20	37	10	24	10	11	M 10 x 1,25	18	0,10	5,0	M 3 x 12
RC 12	25	38	12	28	12	16	M 12 x 1,25	18	0,15	8,0	M 4 x 16
RC 16	30	44	16	36	16	20	M 14 x 1,5	22	0,27	12,5	M 6 x 20
RC 20	40	52	20	45	20	25	M 16 x 1,5	27	0,53	20,0	M 8 x 30
RC 25	50	65	25	56	25	32	M 20 x 1,5	34	1,13	32,0	M 10 x 35
RC 32	65	80	32	70	32	40	M 27 x 2	42	2,18	50,0	M 12 x 40
RC 40	80	97	40	90	40	50	M 33 x 2	52	4,40	80,0	M 16 x 50
RC 50	100	120	50	110	50	63	M 42 x 2	64	7,60	125,0	M 20 x 60
RC 63	140	140	63	140	63	71	M 48 x 2	75	11,70	200,0	M 24 x 80
RC 70 1)	160	160	70	150	70	80	M 56 x 2	90	-	250,0	M 24 x 90
RC 80	180	180	80	170	80	90	M 64 x 3	94	30,60	320,0	M 30 x 100
RC 90 1)	200	195	90	190	90	100	M 72 x 3	108	-	400,0	M 36 x 120
RC 100 1)	220	210	100	210	100	110	M 80 x 3	120	-	500,0	M 36 x 130